



# STAY

## WHEELS AND LADDERS

Castors • Wheels • Trolleys • Ladders • Lifting Equipment  
• Scaffolding • Shelving & Racking



256 Sydney Road, Durban | Tel : 031 205 8964 | Fax : 031 205 8965  
[www.stayagency.co.za](http://www.stayagency.co.za) | Email : [info@stayagency.co.za](mailto:info@stayagency.co.za)

# CASTORS

## GR SERIES CASTOR RANGE - LIGHT DUTY CASTOR (20KG - 80KG)

BOLT HOLE



BOLT HOLE BRAKE



PLATE SWIVEL



PLATE BRAKE



SIZES AVAILABLE IN 50MM, 75MM, 100MM, 125MM

\*AVAILABLE IN GREY RUBBER OR POLYPROPYLENE (NYLON)

\*FIXED OPTION AVAILABLE

## 61/88 SERIES CASTOR RANGE - INDUSTRIAL MEDIUM DUTY CASTOR (50KG - 120KG)

NYLON SWIVEL



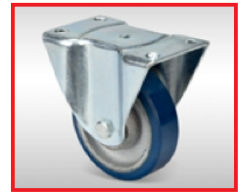
NYLON FIXED



POLYURETHANE SWIVEL



POLYURETHANE FIXED



SIZES AVAILABLE : 50MM, 63MM, 75MM, 100MM

SIZES AVAILABLE : 75MM, 100MM

\*FULL CAST IRON OPTION AVAILABLE

## 22/29 SERIES CASTOR RANGE - INDUSTRIAL MEDIUM DUTY RUBBER CASTOR (75KG - 200KG)

BOLT HOLE



BOLT HOLE BRAKE



PLATE SWIVEL



PLATE BRAKE



FIXED



SIZES AVAILABLE : 75MM, 100MM, 125MM

SIZES AVAILABLE : 80MM, 100MM, 125MM, 160MM, 200MM

## 22/29 SERIES CASTOR RANGE - INDUSTRIAL MEDIUM DUTY NYLON CASTOR (75KG - 125KG)

BOLT HOLE



BOLT HOLE BRAKE



PLATE SWIVEL



PLATE BRAKE



FIXED



SIZES AVAILABLE : 100MM, 125MM

SIZES AVAILABLE : 100MM, 125MM

**22/29 SERIES CASTOR RANGE - INDUSTRIAL MEDIUM DUTY POLYURETHANE CASTOR (100KG-200KG)**

**PLATE SWIVEL**



**PLATE BRAKE**



**FIXED**



**SIZES AVAILABLE : 100MM, 125MM**

**XX/YY SERIES CASTOR RANGE - INDUSTRIAL HEAVY DUTY POLYURETHANE CASTOR (200KG-500KG)**

**PLATE SWIVEL**



**PLATE BRAKE**



**FIXED**



**SIZES AVAILABLE : 100MM, 125MM, 150MM, 200MM**

**\*NYLON OPTION AVAILABLE**

**TH SERIES CASTOR RANGE - INDUSTRIAL HEAVY DUTY CASTOR (200KG - 1000KG)**

**PLATE SWIVEL**



**PLATE BRAKE**



**FIXED**



**SIZES AVAILABLE : 100MM, 125MM, 150MM, 200MM, 250MM, 300MM**

**\*CAST IRON OPTION AVAILABLE**

**WHEELS**

**ELASTIC RUBBER WHEELS**



Size	Weight
100mm	100kg
125mm	125kg
160mm	160kg
200mm	200kg

**POLYURETHANE WHEELS**



Size	Weight
100mm	200kg
125mm	250kg
150mm	350kg
200mm	500kg

**SPLIT DISC WHEELS**



Size	Weight
150mm	100kg
200mm	150kg
250mm	200kg
300mm	200kg
350mm	200kg
400mm	250kg

**PNEUMATIC WHEELS**



Size	Weight
260mm	80kg
300mm	100kg
350mm	150kg
380mm	150kg
400mm	150kg

# SCAFFOLDING

## MILD STEEL SCAFFOLDING



SCAFFOLD CASTORS & BASE JACKS AVAILABLE



SIZES AVAILABLE :  
1.5M, 2.1M, 3M

## ALUMINIUM SCAFFOLDING RANGE



ALUMINIUM SCAFFOLDING  
TOWER RANGE  
\* SINGLE SPAN TOWER SERIES  
\*\* DOUBLE SPAN TOWER SERIES  
\*\*\* STAIRWAY TOWER SERIES

# SHELVING & RACKING

## BOLTED SHELVING



SIZES AVAILABLE ON REQUEST  
\*AVAILABLE IN POWDER COATED  
OR GALVANISED

## INDUSTRIAL RACKING



SIZES AVAILABLE ON REQUEST  
\*AVAILABLE IN MEDIUM & HEAVY  
DUTY

# HYDRAULIC LIFTING EQUIPMENT

## 2500KG - 3000KG PALLET JACK



POLYURETHANE ROLLERS

NYLON ROLLERS

AVAILABLE IN STANDARD & NARROW

## 500KG - 1000KG MANUAL PALLET STACKER



SPECIFICATIONS AVAILABLE ON REQUEST

# STORAGE

## STORE BINS



Reference	Width	Length	Height
STBIN1BLK	105mm	135mm	70mm
STBIN2BLK	105mm	185mm	70mm
STBIN3BLK	140mm	275mm	120mm
STBIN4BLK	205mm	380mm	170mm
STBIN5BLK	420mm	380mm	170mm

COLOURS AVAILABLE ON REQUEST

## STORE BIN PANELS



Height	Width
450mm	450mm
914mm	450mm
1219mm	450mm
1524mm	450mm
1828mm	450mm

## 130LT / 240LT WHEELIE BIN



AVAILABLE IN : GREEN, YELLOW,  
BLACK, ORANGE, BLUE, CHARCOAL,  
RED & WHITE



# TROLLEYS

## PLATFORM TROLLEY RANGE (250KG - 300KG)



Reference	SMPL	LPL
Cap	250kg	300kg
Width	600mm	680mm
Length	900mm	1200mm
Castor Ø	100mm	125mm

## TURNTABLE TROLLEY RANGE (600 - 700KG)



Reference	SMTT	LTT
Cap	600kg	700kg
Width	760mm	910mm
Length	1500mm	1800mm
Wheel Ø	350mm	350mm

## DOUBLE GAS CYLINDER TROLLEY (225KG)



Reference	16 CYT
Cap	200kg
Width	550mm
Height	1200mm
Wheel Ø	200mm

## COKE TROLLEY (225KG)



Reference	5 CCT
Cap	200kg
Width	300mm
Height	1230mm
Wheel Ø	200mm

## BEER CRATE TROLLEY (250KG)



Reference	SAB 10
Cap	250kg
Width	450mm
Height	1350mm
Wheel Ø	200mm

## GAS CYLINDER TROLLEY SINGLE (200KG)



Reference	14 CYT
Cap	200kg
Width	300mm
Height	1200mm
Wheel Ø	200mm

## SINGLE ARM DRUM TROLLEY (300KG)



Reference	SAD
Cap	300kg
Wheel Ø	350mm

## MAMMOTH / ROCKER TROLLEY (800KG)



Reference	14B-MAMC
Cap	800kg
Width	600mm
Length	1500mm
Wheel Ø	200mm
Castor Ø	125mm

## FOLDING NOSE TROLLEY RANGE (225KG)



Reference	FN 1	FN 2	FN 3
Cap	225kg	225kg	225kg
Width	540mm	600mm	460mm
Height	1150mm	1150mm	1150mm
Wheel Ø	200mm	200mm	200mm

## DRUM DECANTING TROLLEY RANGE (250KG)



Reference	DDT
Cap	250kg
Wheel Ø	75mm
Castor Ø	50mm

## ORDER PICKING TROLLEY RANGE (200 - 300KG)



Reference	OP36/3	OP42/3	OP36/2	OP42/2
Cap	200kg	300kg	200kg	300kg
Width	515mm	610mm	515mm	610mm
Length	920mm	1067mm	920mm	1067mm
Castor Ø	100mm	125mm	100mm	125mm

# LADDERS

## A - FRAME LADDERS

These are medium to heavy duty aluminium Ladders. Fibreglass range also available.

### ISL LADDER RANGE (MEDIUM DUTY 115KG)



Reference	No. of Steps	Top Step Height
ISL4	4	1.2m
ISL6	6	1.8m
ISL8	8	2.4m
ISL10	10	3.0m

### SM LADDER RANGE - STRAIGHT LADDER



Reference	No. of Steps	Top Step Height
SM300	10	3.0m
SM420	14	4.2m
SM480	16	4.8m
SM600	20	6.0m

### LAS LADDER RANGE (HEAVY DUTY 135KG)



Reference	No. of Steps	Top Step Height
LAS4	4	1.2m
LAS6	6	1.8m
LAS8	8	2.4m
LAS10	10	3.0m
LAS12	12	3.6m
LAS14	14	4.2m
LAS16	16	4.8m

### DMS LADDER RANGE - MEDIUM DUTY EXTENSION LADDER (115KG)



Reference	Closed Height	Extended Height
DMS600	3.3m	6.0m
DMS780	4.2m	7.8m
DMS900	4.8m	9.0m

### LASD LADDER RANGE (HEAVY DUTY 135KG) DOUBLE SIDED



Reference	No. of Steps	Top Step Height
LASD4	4	1.2m
LASD6	6	1.8m
LASD8	8	2.4m
LASD10	10	3.0m
LASD12	12	3.6m

### DMA LADDER RANGE - HEAVY DUTY EXTENSION LADDER (135KG)



Reference	Closed Height	Extended Height
DMA900	4.8m	9.0m
DMA1200	6.4m	12.0m
DMA1410	7.5m	14.1m

## MOUNTY SAFETY LADDER RANGE - HEAVY DUTY MOBILE SAFETY LADDER



Reference	Top Step Height	Overall Height
ML2	450mm	450mm
MLH4	1000mm	1820mm
MLH5	1270mm	2090mm
MLH6	1520mm	2340mm
MLH8	2020mm	2850mm
MLH10	2510mm	3340mm
MLH12	2970mm	3850mm
MLH15	4280mm	5100mm

## LADDERSTAGE



Closed Height	Extended Height
1.93m	3.31m

Length	Width	Approx. Weight
2.1m	0.75m	40kg